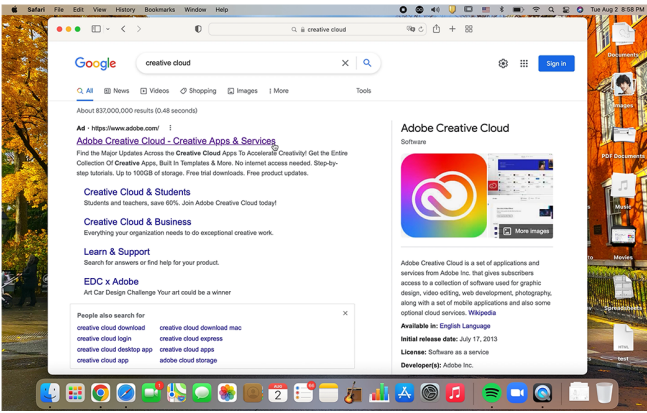
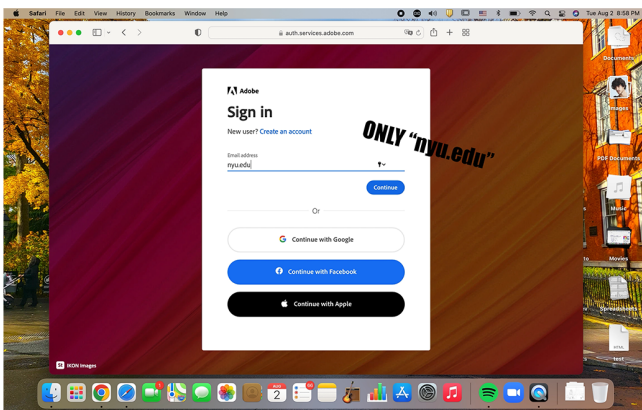
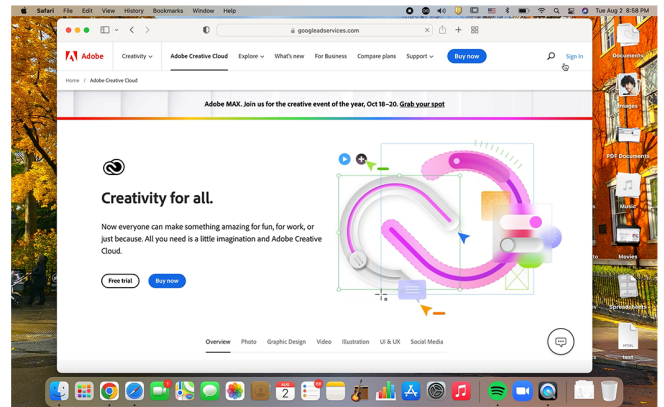


How to connect your NYU account to Adobe Creative Cloud



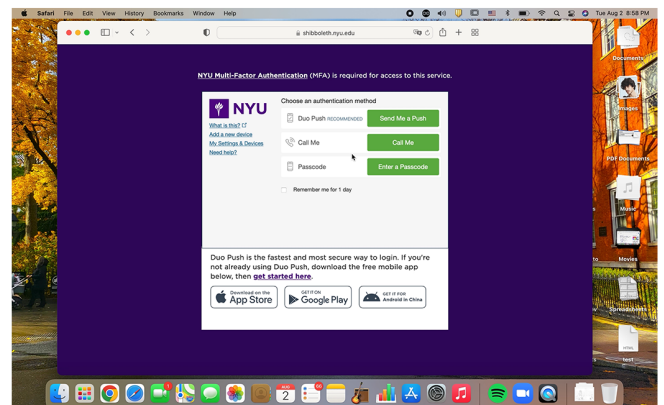
Look up “adobe creative cloud” on Google and click on the top link

On the website, click the “Sign In” button on the top right

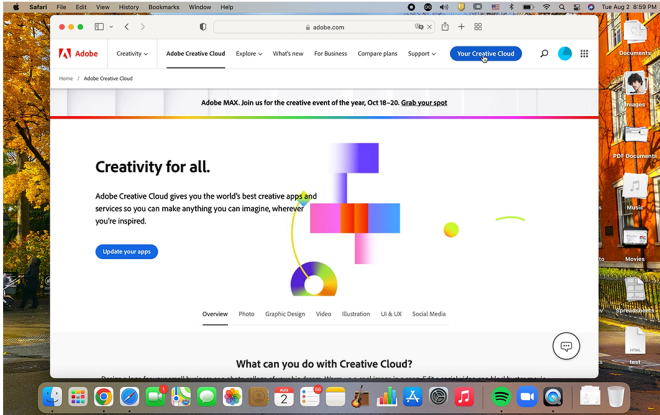


On the log in page, make sure to type ONLY “nyu.edu” into the username field
It is VERY important that you only type in “nyu.edu” and not your full email

This will prompt you to sign into your NYU account, continue with that.

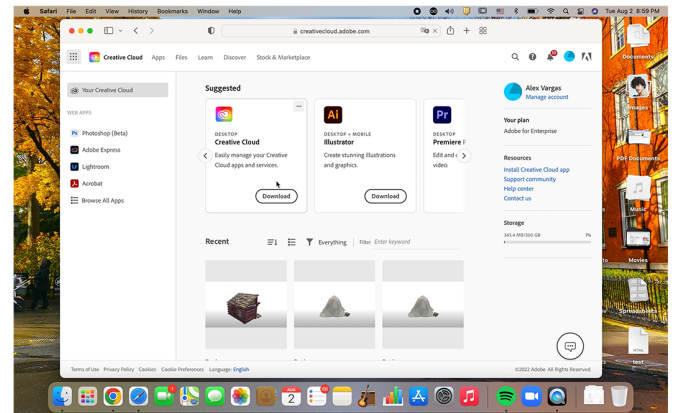


How to connect your NYU account to Adobe Creative Cloud

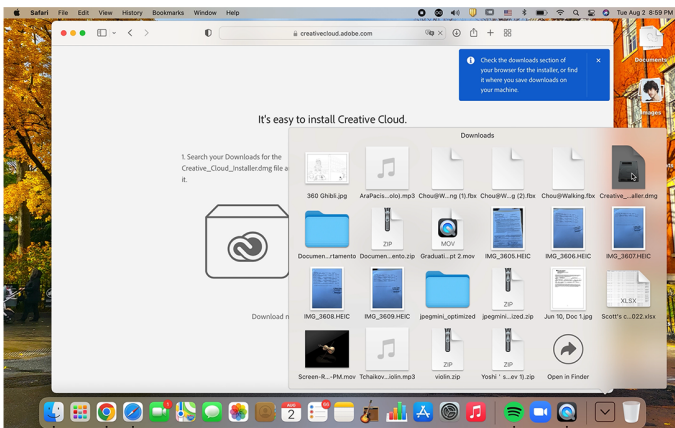


Once logged in, click on the blue "Your Creative Cloud" button on the top bar

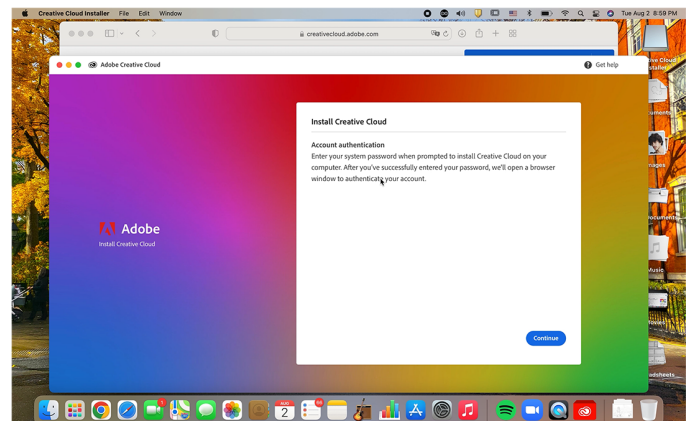
Look for the Creative Cloud app, then click the download button



Open the downloaded document this will open an installation window



Follow the instructions, and wait for the installation to finish. Once it's done, you will have access to all of the Adobe Apps! Have fun!



Frequently Asked Questions/Common Errors

I'm already logged into my NYU account but still don't have access to any of the Adobe applications.

Sign out and sign in using only "nyu.edu" on the username line, chances are you created a non-NYU-affiliated account using your school email.

I signed in and followed all of the instructions correctly, but I still don't have access to the apps.

Contact adobelicense@itp.nyu.edu there might be a chance that your account hasn't been given access to the apps for some reason.

Nothing is working after trying all of these solutions.

In this case, make sure your creative cloud app is updated, if this doesn't fix it, try uninstalling and reinstalling the application.

If your Adobe isn't working after trying all of these feel free to contact adobelicense@itp.nyu.edu for help.