



# Rainforest Swamp

By: Chelsea Heard

# Intent:

To create an immersive artistic experience using the rainforest, swamp, and the wildlife that resides in each area!

# Use:

- Sound
  - Drawings
  - images (maybe)
- Immersive Drawing 360 app (still have yet to find this!)



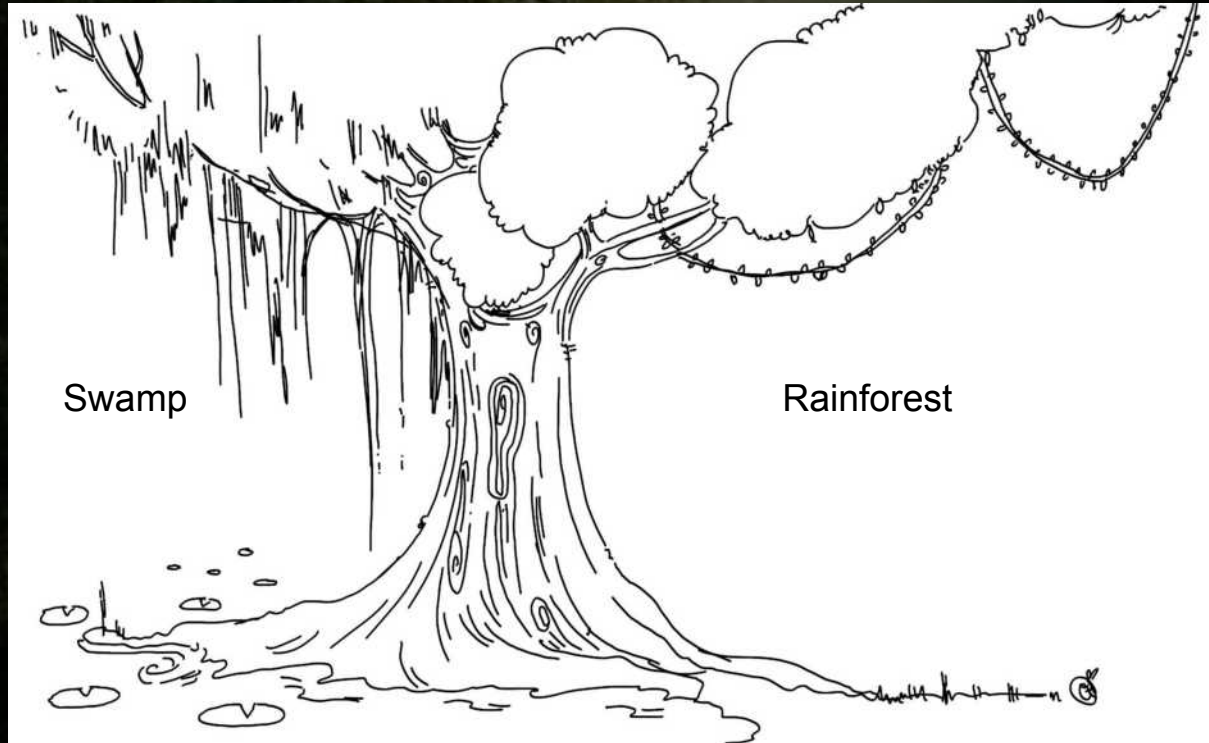
# Goal:

To be fun, while also teaching the user(s) about the rainforest, swamp, and art.





# Starter Bibliography



# Starter Bibliography



## Swamp

- ➔ Exploration of Nature (Swamp)
- ➔ Sands are present!
- ➔ Click & Learn about the wildlife that exists in the Swamp!



# Starter Bibliography

Rainforests

➔ Sands from  
Rainforest

➔ Fun

➔ Educational

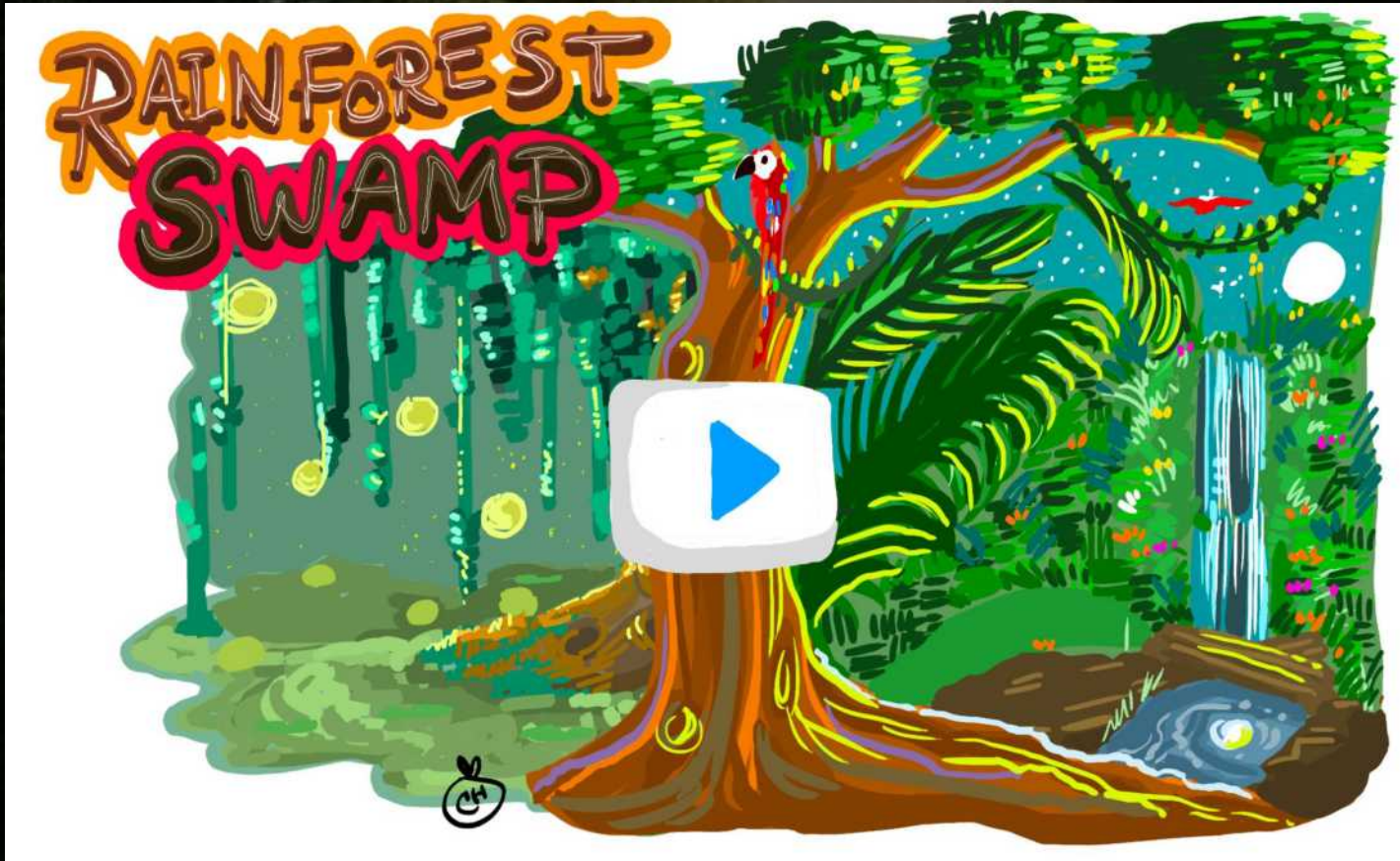
➔ Playing around  
with  
colors!



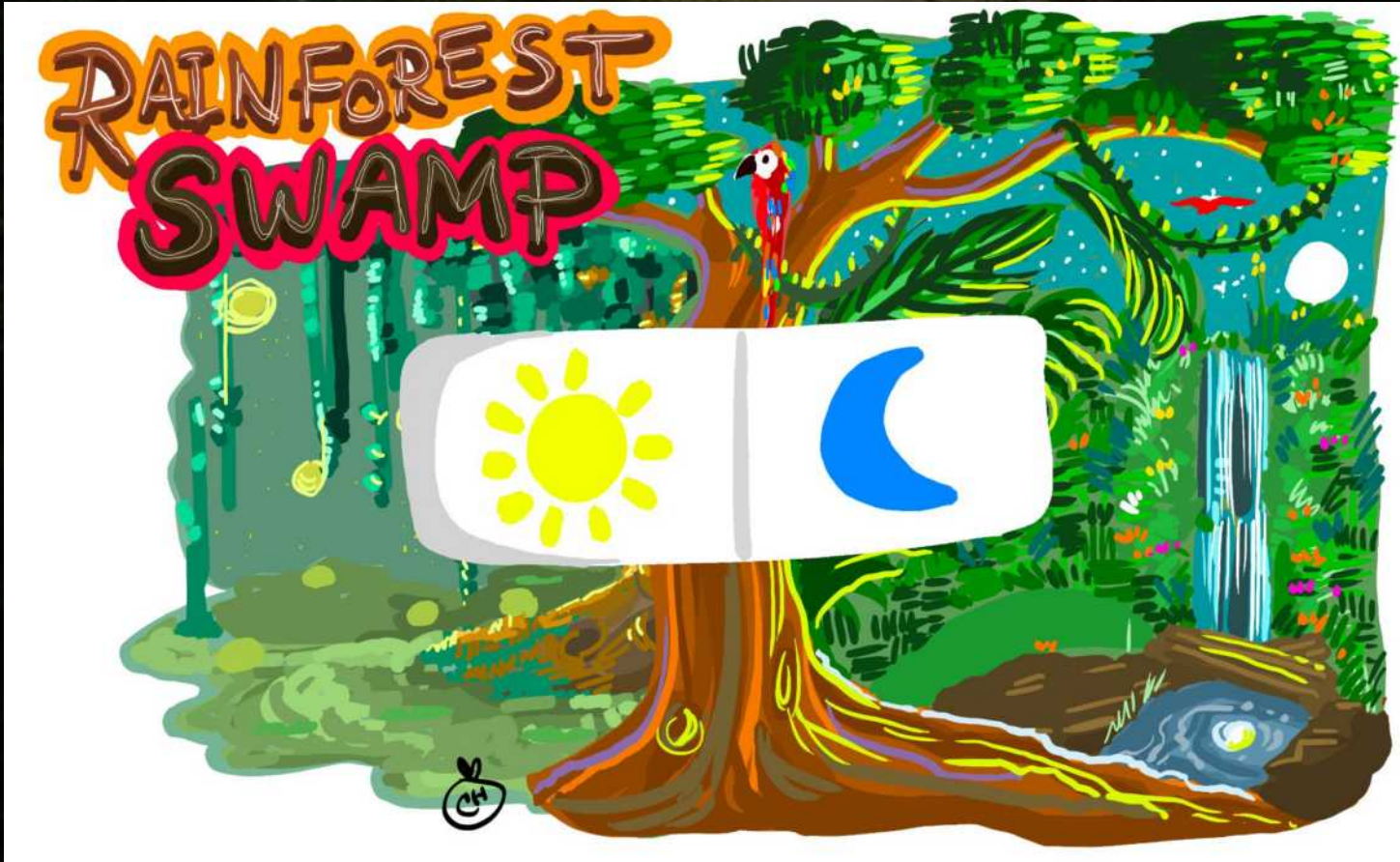
# Starter Bibliography



# Starter Bibliography



# Starter Bibliography



# Starter Bibliography

<https://www.tiltbrush.com/>

<https://nvrmind.io/>

<https://www.gravitysketch.com/>

[https://play.google.com/store/apps/details?id=com.microsoft.garage.sketch360app&hl=en\\_US&gl=US&pli=1](https://play.google.com/store/apps/details?id=com.microsoft.garage.sketch360app&hl=en_US&gl=US&pli=1)

<https://www.spoon-tamago.com/2016/03/17/oiwa-island-a-massive-drawing-within-an-inflatable-vinyl-dome-by-oscar-oiwa/#more-3587>